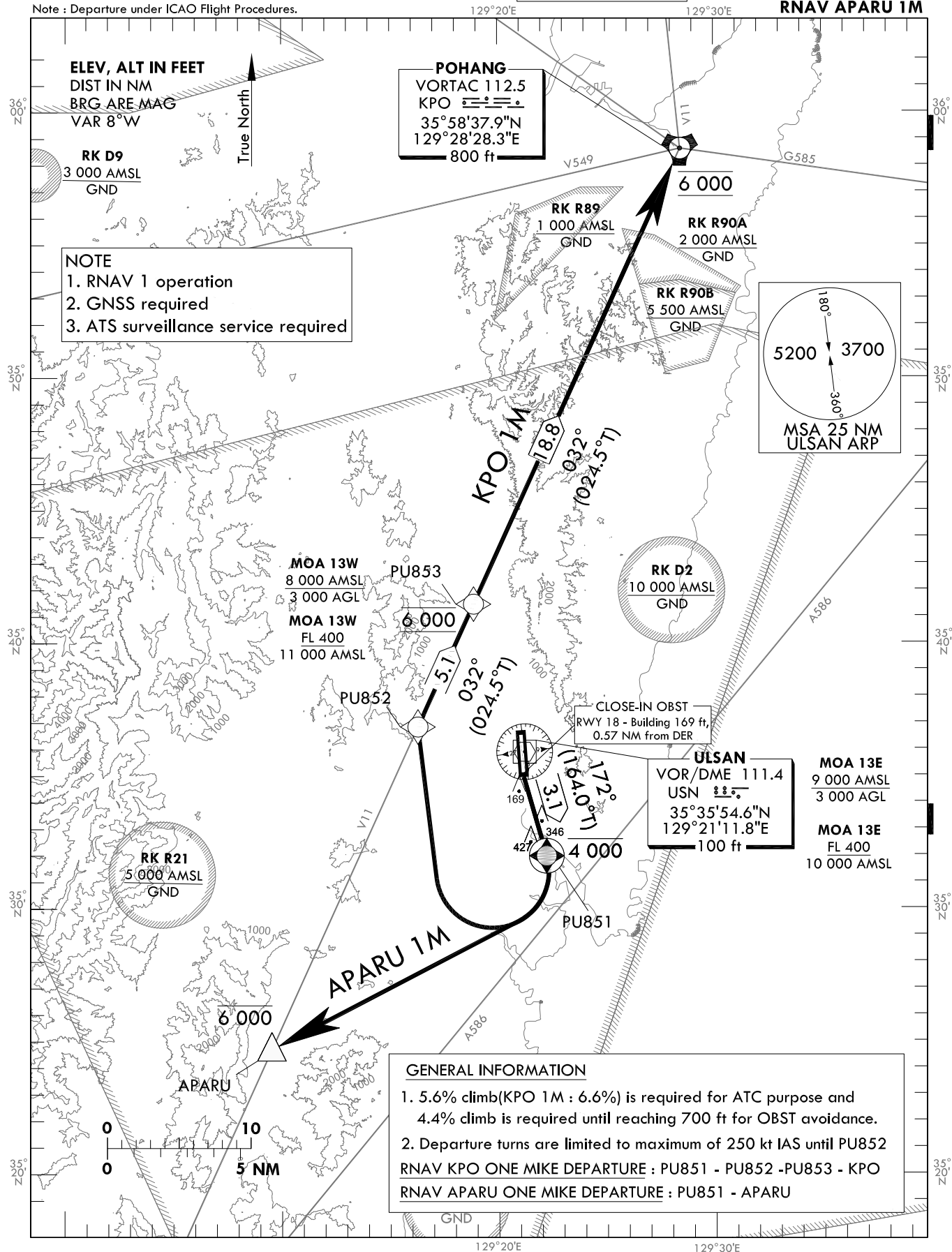


POHANG DEP	120.2
	232.4
ULSAN TWR	118.75

**ULSAN/Ulsan(RKPU)
RWY 18
RNAV KPO 1M
RNAV APARU 1M**

Note : Departure under ICAO Flight Procedures.



Change : Amended coordinate format.

ULSAN/Ulsan(RKPU)
RWY 18
RNAV KPO 1M, RNAV APARU 1M

AERONAUTICAL DATA TABULATION

Standard Instrument Departure Procedure Coding Tables

RNAV KPO 1M

Serial Number	Path Descriptor	Waypoint Identifier	Fly-over	Course/Track °M(°T)	Distance (NM)	Turn direction	Altitude (ft)	Speed (kt)	Coordinates	VPA/RDH	Navigation specification	Remarks
001	CF	PU851	Y	172(164.0)	3.1	-	-4 000	-250	35°31'59.3"N 129°22'12.1"E	-	RNAV 1	-
002	DF	PU852	-	-	-	R	-	-250	35°36'51.2"N 129°16'16.8"E	-	RNAV 1	-
003	TF	PU853	-	032(024.5)	5.1	-	@6 000	-	35°41'28.6"N 129°18'51.5"E	-	RNAV 1	-
004	TF	KPO	-	032(024.5)	18.8	-	@6 000	-	35°58'37.9"N 129°28'28.3"E	-	RNAV 1	-

RNAV APARU 1M

Serial Number	Path Descriptor	Waypoint Identifier	Fly-over	Course/Track °M(°T)	Distance (NM)	Turn direction	Altitude (ft)	Speed (kt)	Coordinates	VPA/RDH	Navigation specification	Remarks
001	CF	PU851	Y	172(164.0)	3.1	-	-4 000	-250	35°31'59.3"N 129°22'12.1"E	-	RNAV 1	-
002	DF	APARU	-	-	-	R	-6 000	-	35°24'42.1"N 129°09'32.1"E	-	RNAV 1	-

Change : Amended coordinate format.

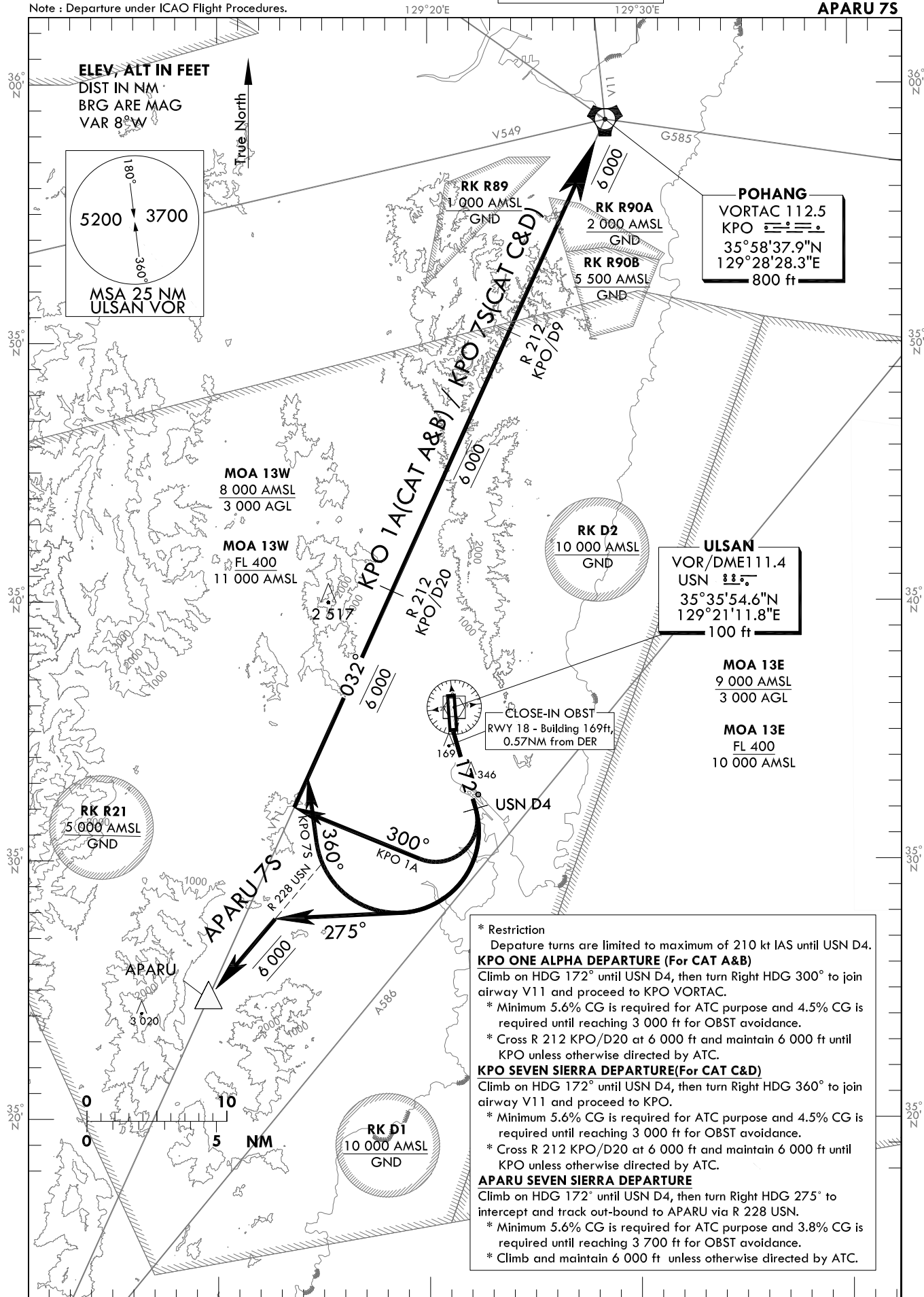
STANDARD DEPARTURE CHART
INSTRUMENT(SID) - ICAO

TRANSITION ALT 14 000
TRANSITION LVL FL 140

POHANG DEP 120.2
232.4
ULSAN TWR 118.75

ULSAN/Ulsan(RKPU)
RWY 18
KPO 1A, KPO 7S
APARU 7S

Note : Departure under ICAO Flight Procedures.



Change : Amended coordinate and radial format.

INTENTIONALLY

LEFT

BLANK

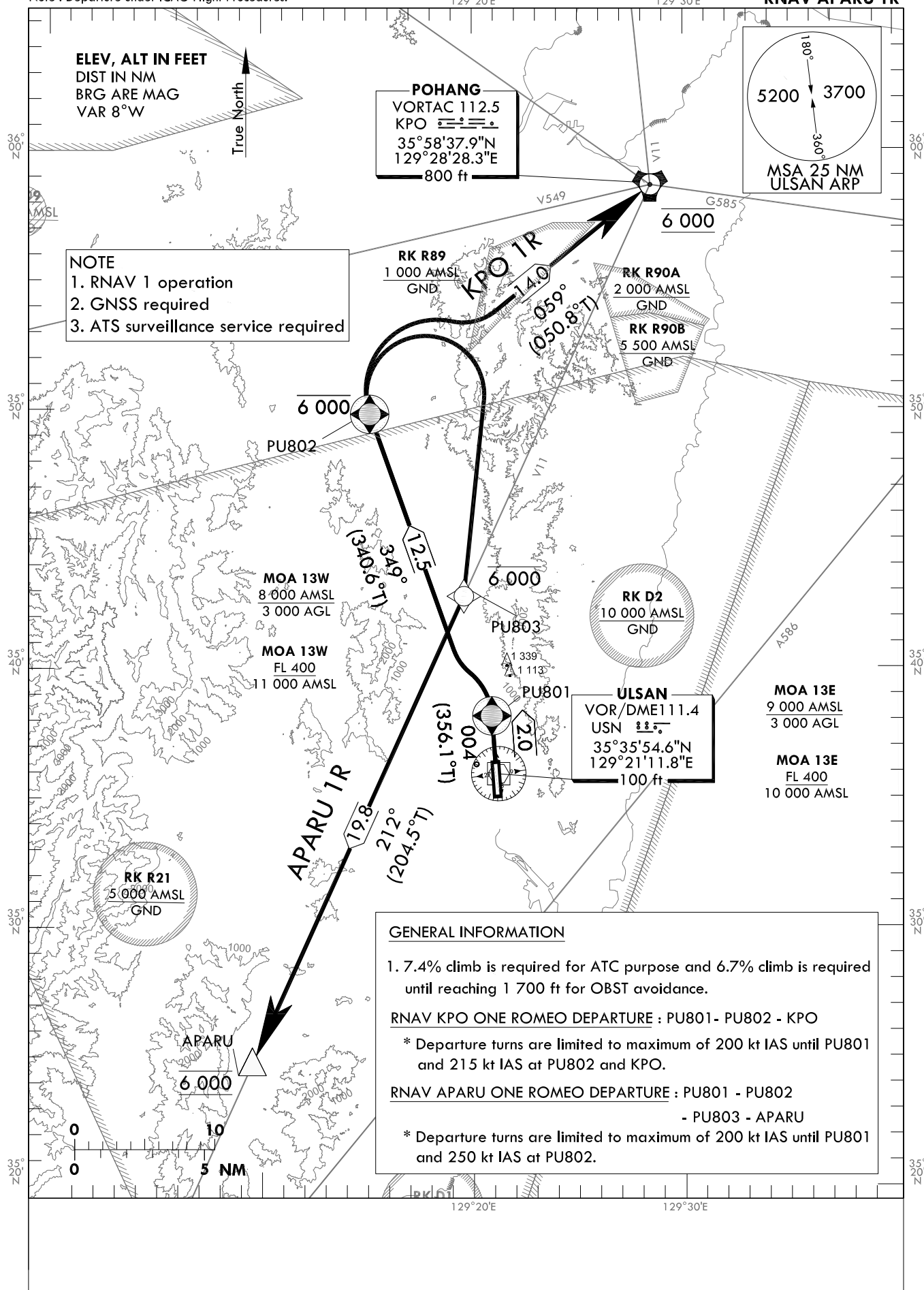
**STANDARD DEPARTURE CHART
INSTRUMENT(SID) - ICAO**

TRANSITION ALT 14 000
TRANSITION LVL FL 140

POHANG DEP 120.2
232.4
ULSAN TWR 118.75

ULSAN/Ulsan(RKPU)
RWY 36
RNAV KPO 1R
RNAV APARU 1R

Note : Departure under ICAO Flight Procedures.



Change : Amended coordinate format.

ULSAN/Ulsan(RKPU)
RWY 36
RNAV KPO 1R, RNAV APARU 1R

AERONAUTICAL DATA TABULATION

Standard Instrument Departure Procedure Coding Tables

RNAV KPO 1R

Serial Number	Path Descriptor	Waypoint Identifier	Fly-over	Course/Track °M(°T)	Distance (NM)	Turn direction	Altitude (ft)	Speed (kt)	Coordinates	VPA/RDH	Navigation specification	Remarks
001	CF	PU801	Y	004(356.1)	2.0	-	-	-200	35°38'08.8"N 129°20'53.5"E	-	RNAV 1	-
002	CF	PU802	Y	349(340.6)	12.5	-	-6 000	-215	35°49'48.4"N 129°15'08.6"E	-	RNAV 1	-
003	TF	KPO	-	059(050.8)	14.0	-	@6 000	-215	35°58'37.9"N 129°28'28.3"E	-	RNAV 1	-

RNAV APARU 1R

Serial Number	Path Descriptor	Waypoint Identifier	Fly-over	Course/Track °M(°T)	Distance (NM)	Turn direction	Altitude (ft)	Speed (kt)	Coordinates	VPA/RDH	Navigation specification	Remarks
001	CF	PU801	Y	004(356.1)	2.0	-	-	-200	35°38'08.8"N 129°20'53.5"E	-	RNAV 1	-
002	CF	PU802	Y	349(340.6)	12.5	-	-6 000	-250	35°49'48.4"N 129°15'08.6"E	-	RNAV 1	-
003	DF	PU803	-	-	-	R	-6 000	-	35°42'45.9"N 129°19'34.7"E	-	RNAV 1	-
004	TF	APARU	-	212(204.5)	19.8	-	@6 000	-	35°24'42.1"N 129°09'32.1"E	-	RNAV 1	-

Change : Amended coordinate format.

POHANG DEP	120.2
	232.4
ULSAN TWR	118.75

ULSAN/Ulsan(RKPU)
RWY 36
KPO 8N
APARU 8N

129°20'E

129°30'E



INTENTIONALLY

LEFT

BLANK